

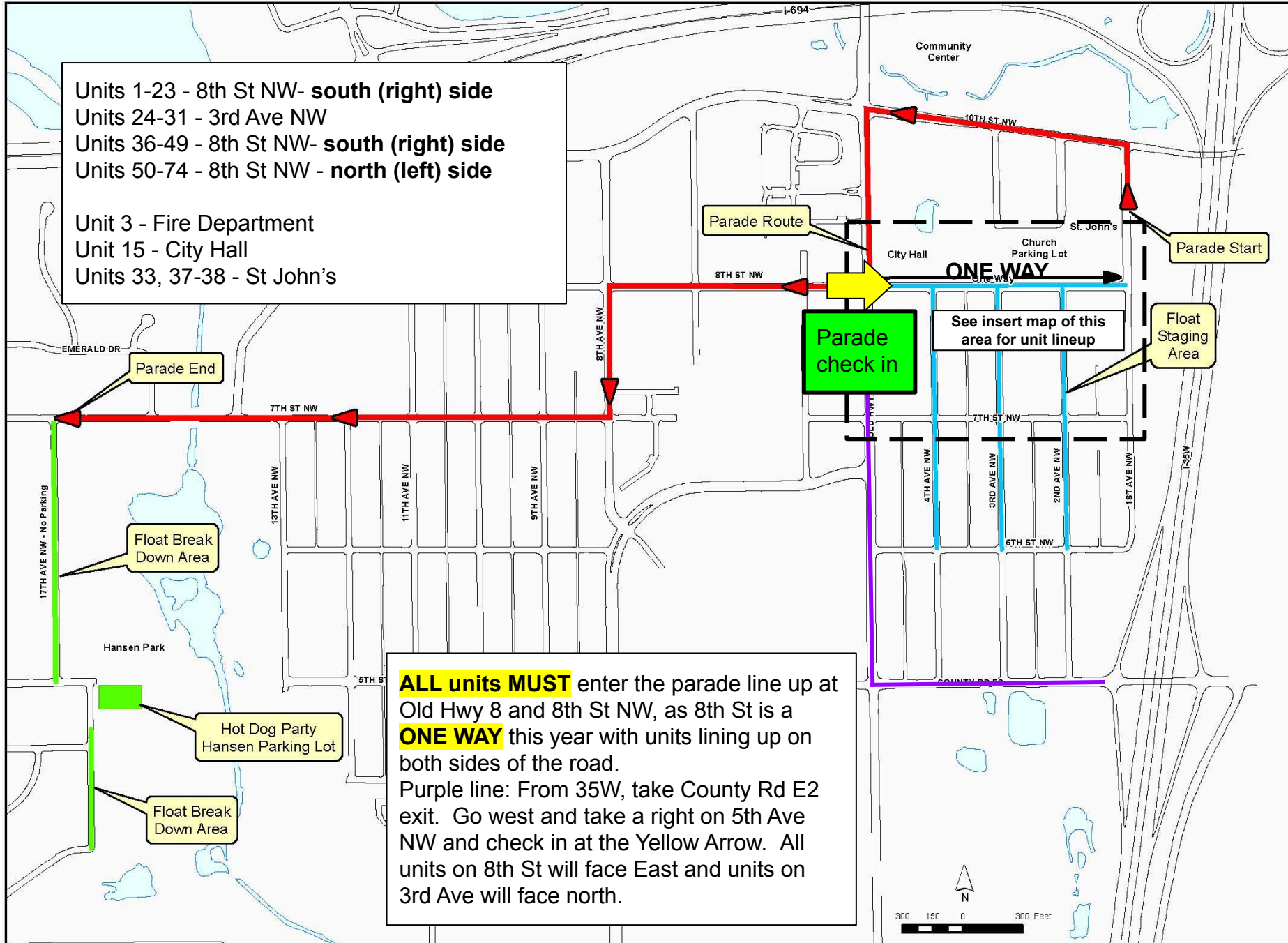
Number	Unit
1	Brooker-Edmund VFW Post 724
2	Metro Marines Color Guard
3	New Brighton Fire Department
4	New Brighton City Council
5	Grand Marshal - Ralph Reeder Food Shelf
6	New Brighton Ambassadors & Candidates
7	District 39 Legislative Caucus
8	Mary Jo McGuire, Ramsey County Commissioner
9	Volunteers for John Choi, Ramsey County Attorney
10	New Brighton Lions
11	New Brighton Sportsmen's Club
12	New Brighton League of Women Voters
13	New Brighton Parks & Recreation Department
14	Northstar Bus Lines/American Student Transportation
15	Irondale Marching Knights
16	Applewood Pointe of New Brighton
17	Twin Cities Slovenians
18	Core Pet Zone
19	Klobuchar For Minnesota
20	Round Lake Senior Living
21	Irondale Knightline Dance Team
22	Minnesota Renaissance Festival
23	Irondale High School Student Council
24	St. Paul Winter Carnival Vulcan Krewe
25	St. Paul Winter Carnival Royal Family
26	St. Paul Winter Carnival Junior Royalty
27	St. Paul Winter Carnival Senior Royalty
28	St. Paul Winter Carnival West Wind Organization
29	Royal Order of Klondike Kates
30	Twin City Transport & Recovery
31	Cub Scout Pack 419
32	Ark Pet Hospital
33	Irondale High School Football Team
34	Eagan July 4th Funfest Ambassadors
35	1949 DeSoto Custom
36	Tin Cups Steel Drum Band
37	St John the Baptist Catholic School

38	St. John the Baptist Catholic Church Festival and BOOYA
39	Moore Than Dance
40	Rice Street Festival Royalty
41	Henry 1928 Ford Model A Tudor
42	Clowns Across the River
43	Mounds View Indian Education Program
44	Minneapolis Aquatennial Senior Alumni Association
45	Create Space Health/Girl Scouts
46	A Tree Service Inc.
47	Cambridge Ambassador Program
48	Heidi Danielson and Jonathan Weinhagen for Mounds View School Board
49	Mounds View Irondale Youth Hockey Association
50	Twin Cities Unicycle Club
51	Irondale KnightKrawler Robotics
52	Dirty Boys Landscaping/Perfectly Arranged Planters
53	Isanti Ambassador Program
54	Kiddie Ride Trailer Fun
55	Cub Foods of New Brighton
56	Senate District 39 Republicans Committee
57	Woodbury Days Ambassadors
58	Northeast Bank
59	Osman Shrine Clowns
60	Maple Grove Ambassadors
61	Rise and Shine Service Van
62	Kracker Jacks Drumline
63	Irondale High School Boys and Girls Soccer Teams
64	Anoka Halloween Ambassadors
65	Common Sense School Board Candidates
66	Portable Storage of MN, Inc
67	United Church of Christ in New Brighton
68	Cottage Grove Strawberry Fest Ambassadors
69	Community Partners with Youth
70	Metropolitan Mosquito Control District
71	St. Louis Park Parktacular Ambassadors
72	Two Men And A Truck
73	June Lynne Lacey Foundation & Navy League of the United States Minnesota Council
74	Frovik's Towing & Recovery

New Brighton Stockyard Days Parade - Float Info

Units 1-23 - 8th St NW- **south (right) side**
 Units 24-31 - 3rd Ave NW
 Units 36-49 - 8th St NW- **south (right) side**
 Units 50-74 - 8th St NW - **north (left) side**

Unit 3 - Fire Department
 Unit 15 - City Hall
 Units 33, 37-38 - St John's



Parade End

Float Break Down Area

Hot Dog Party Hansen Parking Lot

Float Break Down Area

Parade Route

Parade check in

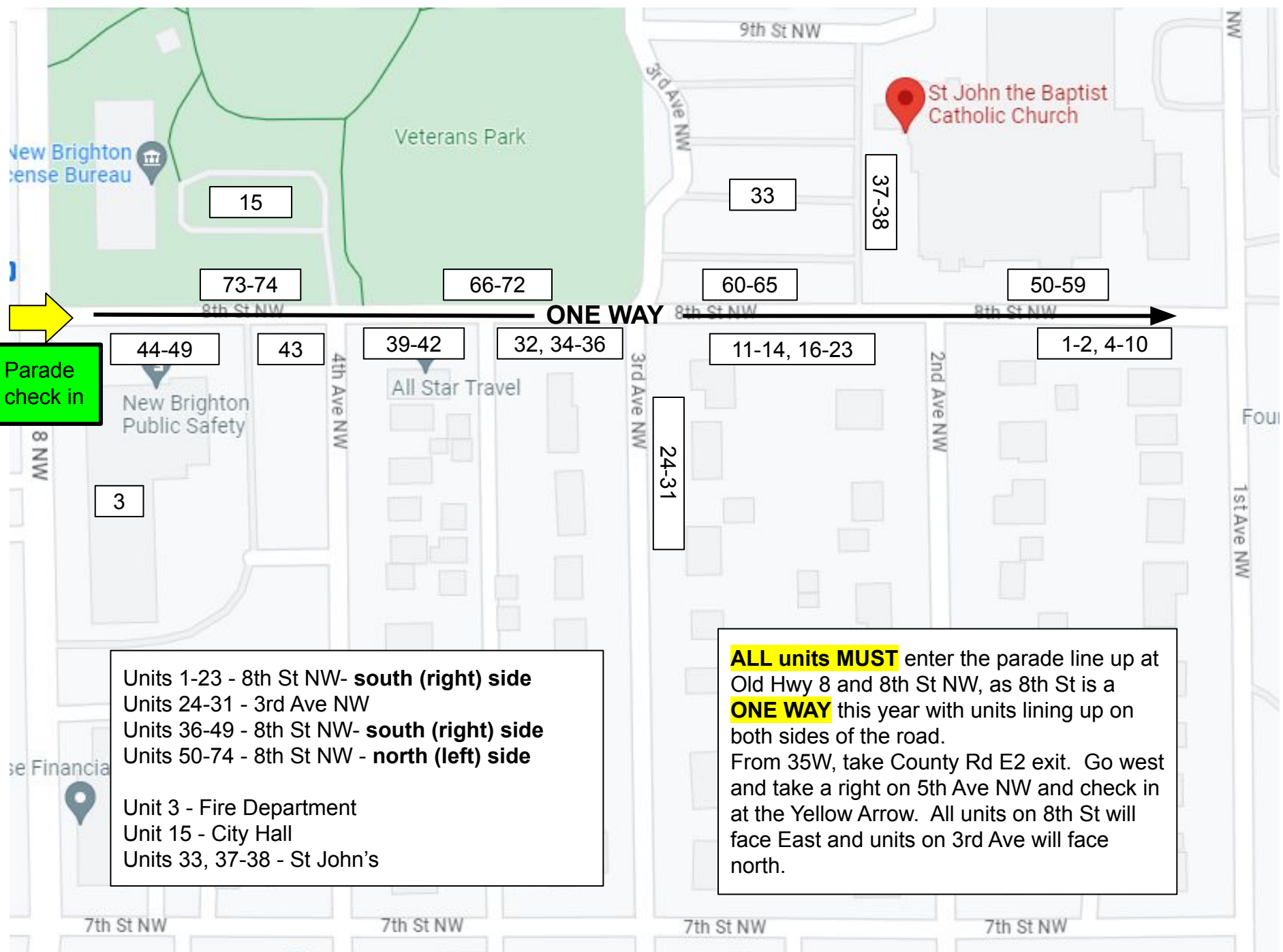
See insert map of this area for unit lineup

Parade Start

Float Staging Area

ALL units MUST enter the parade line up at Old Hwy 8 and 8th St NW, as 8th St is a **ONE WAY** this year with units lining up on both sides of the road.
 Purple line: From 35W, take County Rd E2 exit. Go west and take a right on 5th Ave NW and check in at the Yellow Arrow. All units on 8th St will face East and units on 3rd Ave will face north.

300 150 0 300 Feet



Units 1-23 - 8th St NW- **south (right) side**
Units 24-31 - 3rd Ave NW
Units 36-49 - 8th St NW- **south (right) side**
Units 50-74 - 8th St NW - **north (left) side**

Unit 3 - Fire Department
Unit 15 - City Hall
Units 33, 37-38 - St John's

ALL units MUST enter the parade line up at Old Hwy 8 and 8th St NW, as 8th St is a **ONE WAY** this year with units lining up on both sides of the road.

From 35W, take County Rd E2 exit. Go west and take a right on 5th Ave NW and check in at the Yellow Arrow. All units on 8th St will face East and units on 3rd Ave will face north.